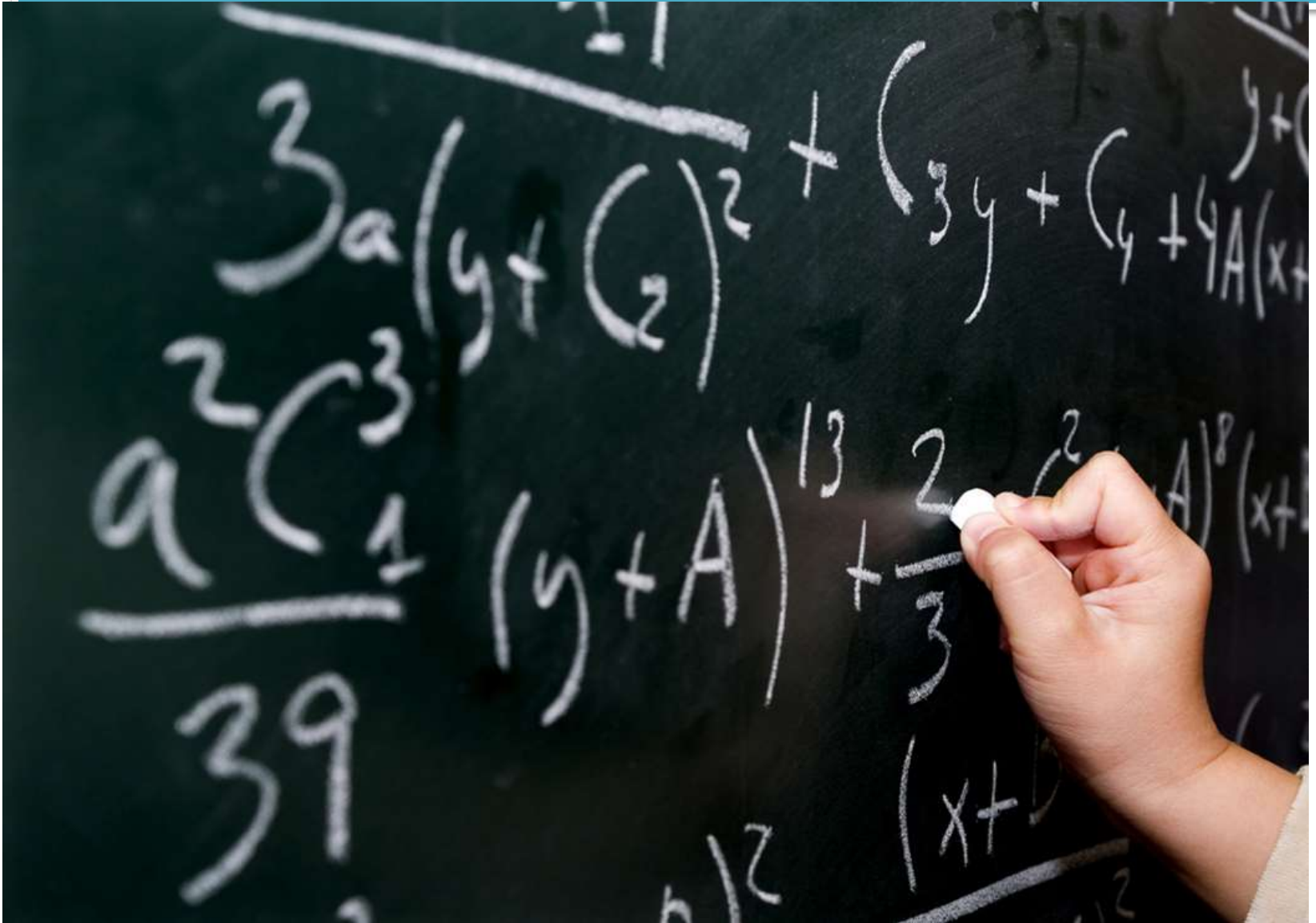


Welcome Parents and Students

C
O
L
L
E
G
E

A
P
P
L
I
C
A
T
I
O
N
S



Mr. Pellicori



AJ Laird
New Student
Specialist






R U Ready?!

- Choose HS courses that challenge you
- Do well on the ACT (22 or above)
- Fulfill your community service hours
- Consider financial aid/scholarships \$\$\$
- Then...

Finally... the big decision....to what school should I apply and how/when do I do that?!



Things to Consider

- Technical College
VS
- Public College
VS
- Private College



What's the Difference?

Considering a Technical College?

(like Gateway or MATC)

- Top Reasons:

1- Hands-on learning

2- Affordable tuition

3- Shorter time investment

4- Strong job placement

5- Instructors are industry experts

6- Some credits transfer to a four-year program



Private Colleges and Universities

(like Carthage of Marquette)

- * Average Tuition/Fees are \$24,273
- * The average class size is 17 students
- * Increases your opportunity for the following:

1- to graduate in 4 years

2- to study abroad

3- to participate in sports, community service and other college activities



Public Universities (in Wisconsin)

- 13 freshman/sophomore campuses
- (tuition 4, 750/yr. and guaranteed transfer of credits)



- 13 four-year universities and they are:
Eau Claire, Green Bay, La Crosse, Madison,
Milwaukee, Oshkosh, Parkside, Platteville,
River Falls, Stevens Point, Stout, Superior and
Whitewater

Applying for Admission

- Most campuses have begun the process of accepting application. Check your college's web page for deadlines. (I say to get them in by Christmas.) But Feb. 1 is a common deadline.
-

- Applying on-line is the easiest way to go but you can always request a paper copy of the application too.



- You will need:
 - ACT/SAT scores
 - Official HS transcripts
 - Application fee (can be waived ... see me)



Please take a look at pg.22-37 in for specifics

Major Mania

A signpost with two blank white arrow-shaped signs pointing in opposite directions against a blue sky with white clouds. The signpost is a grey metal pole with two white arrow-shaped signs attached. One sign points to the right and the other points to the left. The background is a bright blue sky with scattered white clouds.

- Choosing a major ... check out:
majormania.uwex.edu
- * Undergraduate programs are listed on page
38-43 in the UW-Help booklet

How am I going to pay for College?

- Scholarships
- Grants
- Financial Aid



- College Goal WI is a free program to help families with FAFSA on February 7 at 2pm at Gateway and on February 21 at 2 p.m. at UW- Parkside (see Pink handout)

See pages 44 - 47 of the booklet and come back to another session of Evening with the Counselor on Thursday, 11/13/14

Living on Campus

There are Housing Requirements see pg. 48 & 49

- First you have to be admitted then we'll get you the housing information, OK?
- Just remember to meet the deadlines and you'll be o.k.



Have Fun and Study a lot

